



LOCATION

Stratton, OH

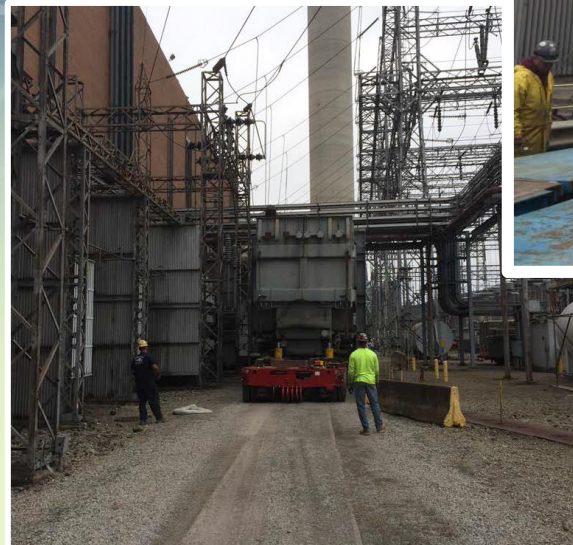
DATE OF WORK

April 2015

PROJECT

B-8889

Switch out transformer
at substation



In April, HLI coordinated the replacement of a power transformer at a site in Stratton, OH. The crew started the four day job with the removal of the old unit. They jacked the timeworn transformer up to the trailer elevation and slid it onto the self-propelled modular trailer with a hydraulic jack and slide system. Next, the team carefully maneuvered the trailer through the crowded substation to a crib pile in a designated area and offloaded the unit for storage there.

The next day, the crew began the transport of the replacement unit. The route to the substation traversed a short bridge that could not hold the weight of the massive transformer, so HLI used a bridge jumper to span the distance and keep the weight off the bridge structure. The modular trailer hauled the new unit over the bridge and through the substation to the recently cleared pad. Using a jack and slide system, the crew offloaded the unit from the trailer onto the pad where it awaited final installation. The job was completed safely, on time, and within budget.